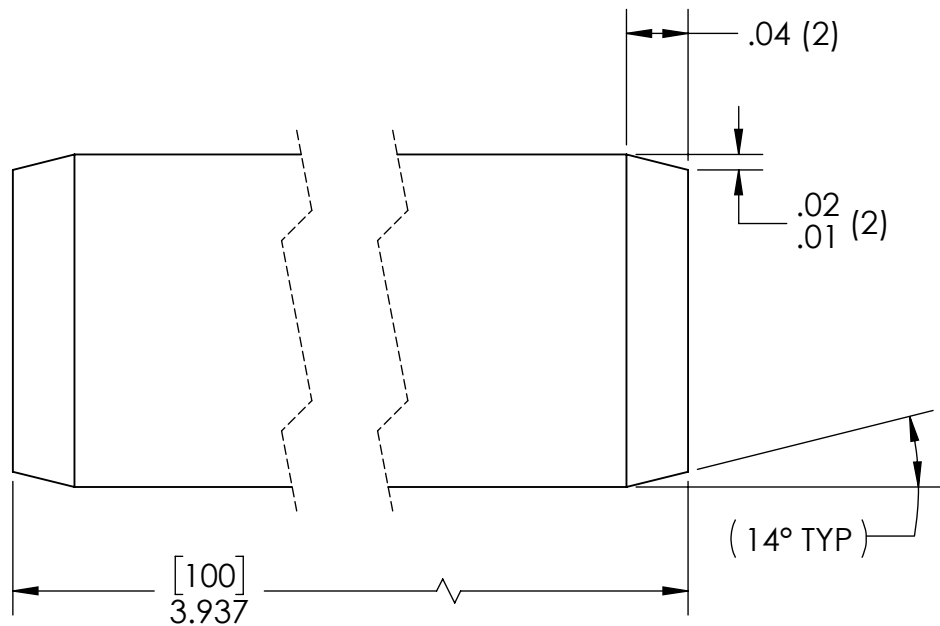
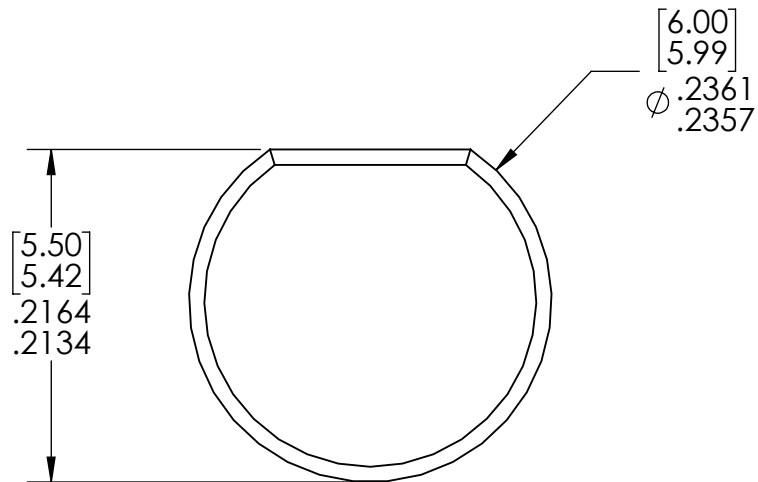



REVISION HISTORY			
REV.	DESCRIPTION	DATE	DRAWN BY
1	ORIGINAL PRINT		D. BLAU
2	UPDATED TOLERANCE ON DIMENSION TO FLAT	9/9/15	N. LAWRENCE
3	DRAWN TO MEET AMDS-1	5/16/2018	A. SHORES
4	ALTERED CHAMFERS	8/16/2018	D. BLAU



ACTUAL SIZE

\*\*\* SEE CAD FOR ADDITIONAL TOOLPATH INFO\*\*\*

UNLESS OTHERWISE SPECIFIED:		COMMENTS:					
<b>DIMENSIONS ARE IN INCHES</b>		DUAL DIMENSIONS ARE IN MILLIMETERS.					
TOLERANCES:		BREAK ALL SHARP EDGES.		TITLE:			
FRACTIONAL	±1/16			6mm D SHAFT			
ANGULAR: MACH	±1°			100mm FINISHED LENGTH			
ANGULAR: BEND	±5°						
ONE PLACE DECIMAL	±0.1						
TWO PLACE DECIMAL	±0.01						
THREE PLACE DECIMAL	±0.005						
FOUR PLACE DECIMAL	±0.0005						
MATERIAL	4140 STEEL	CHECKED	NAME	DATE	SIZE	DWG. NO.	REV
FINISH	ZINC PLATED	ENG APPR.	NL	8/16/18	<b>A</b>	am-3226-100	<b>4</b>
DO NOT SCALE DRAWING		MFG APPR.			SCALE: 8:1		SHEET 1 OF 1
		Q.A.					