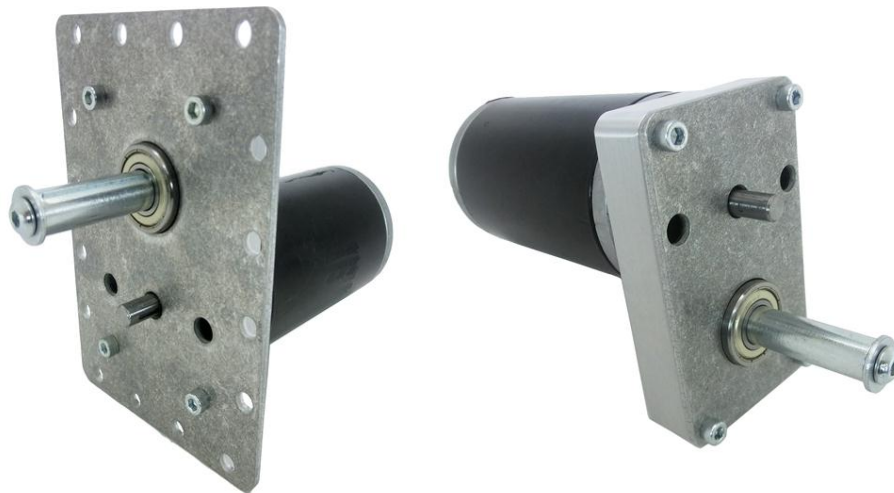
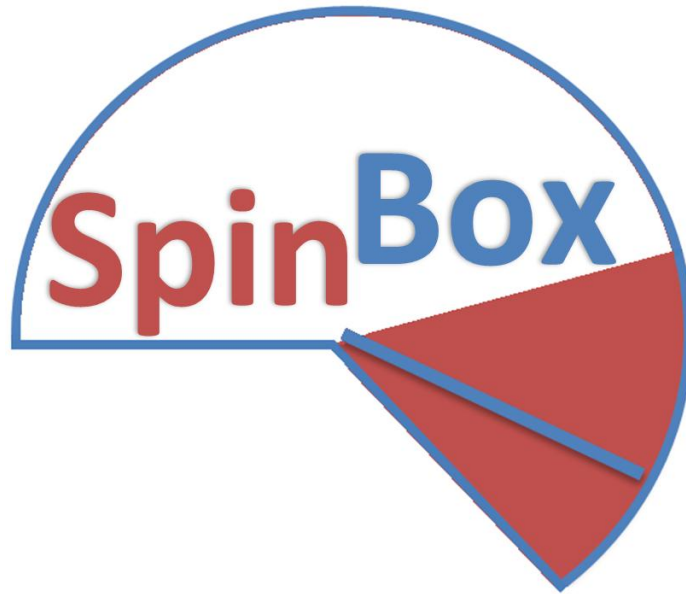
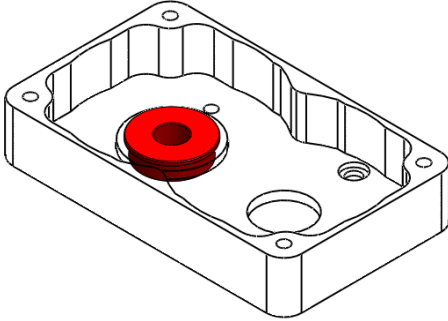


SpinBox

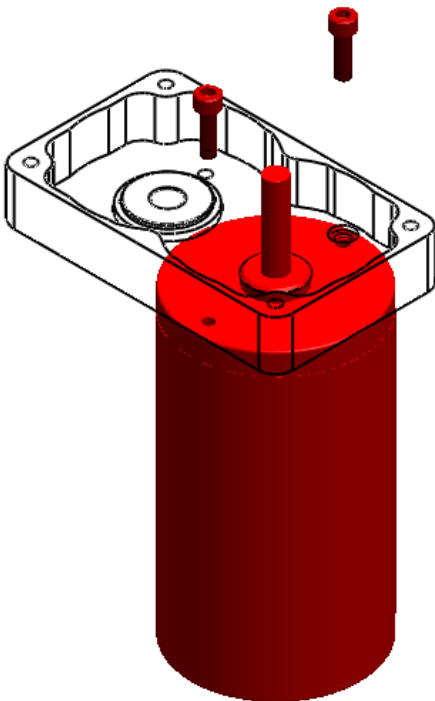
Assembly Guide



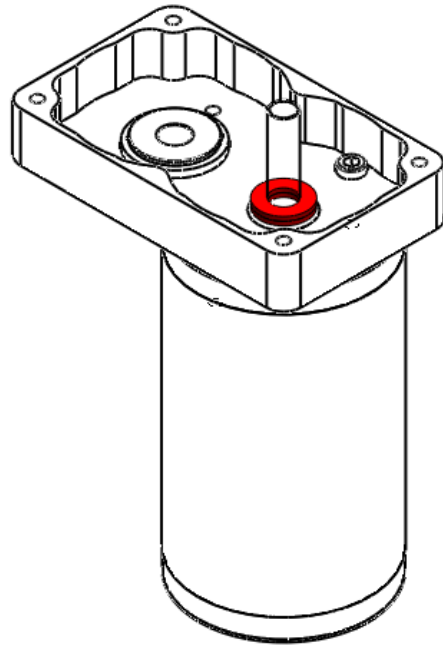
Step 1: Press the FR6ZZ Bearing (am-0028) into the SpinBox Housing (am-2456).



Step 2: Attach a CIM Motor (am-0255) into the CIM mounting holes in the housing using *TWO* 10-32 x 0.625" Screws (am-1120).



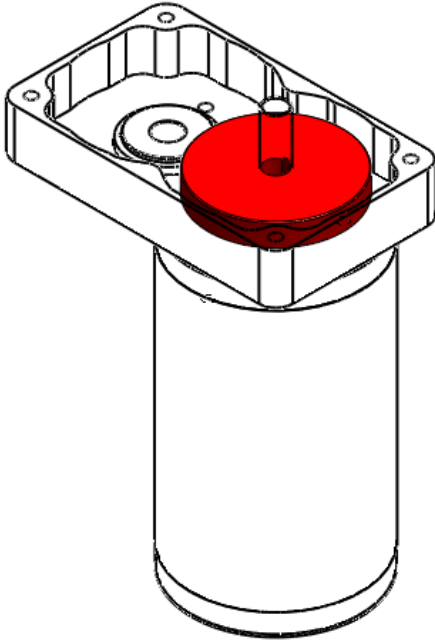
Step 3: Place the 185x385 Nylon Washer (am-2271) on the CIM Motor output shaft.



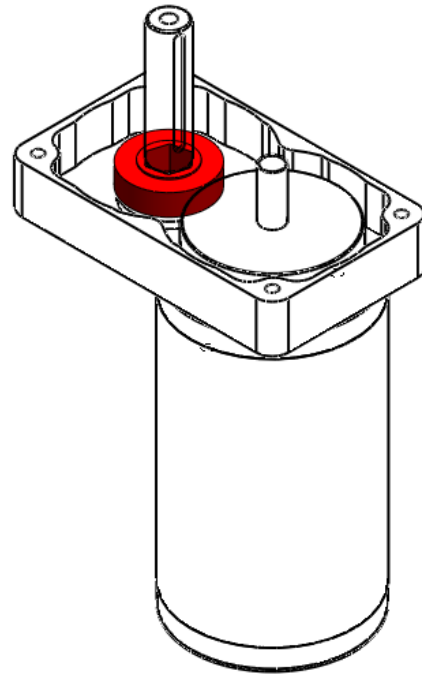
Tip:

Press the 2mmx2mmx10mm Machine Key (am-1121) into the keyway of the output shaft.

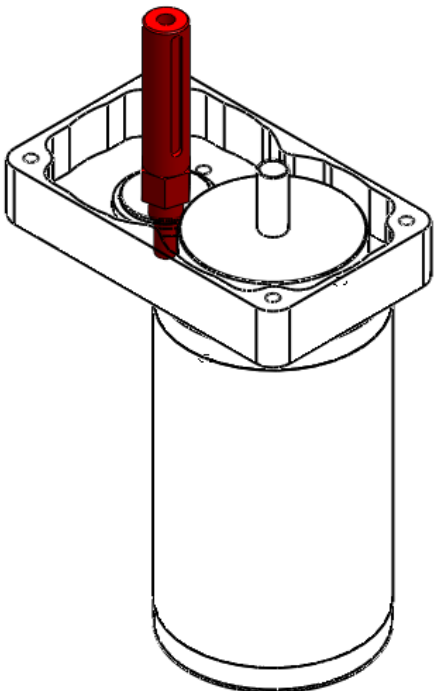
Step 4: Line up and place the 35 Tooth CIM Gear (am-2460) onto the output shaft.



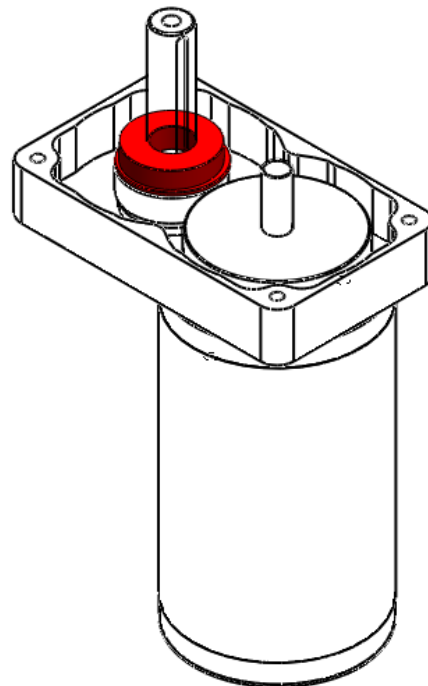
Step 6: Slide the 29 Tooth Hex Gear (am-2461) onto the CIMple Box Shaft.



Step 5: Insert the CIMple Box Output Shaft (am-0740) into the FR6ZZ Bearing.



Step 7: Slide the FR8ZZ Bearing (am-0030) onto the CIMple Box Shaft.



Step 8: Place and secure the SpinBox Shaft Plate (am-2457/am-2463) onto the housing using *FOUR* 10-32 x 0.625" Screws (am-1121).

