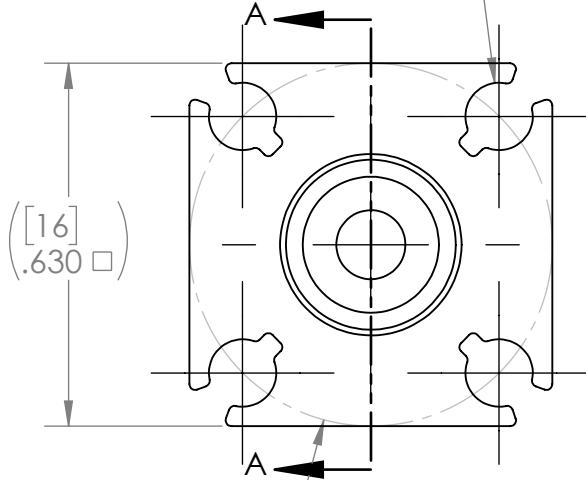


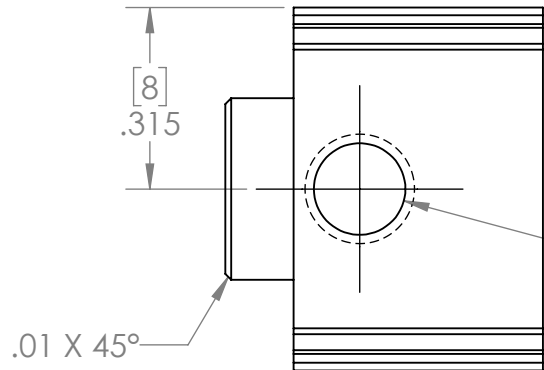
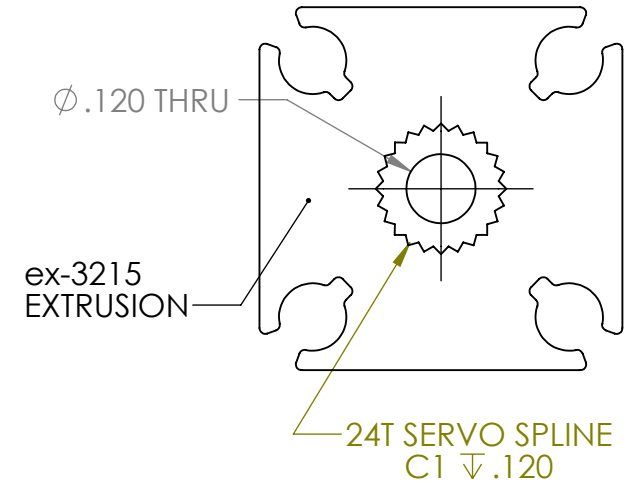
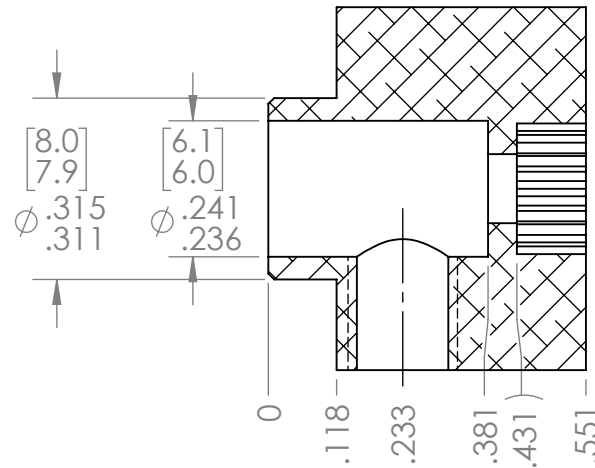
Ø .117 THRU FOR 6-32
SELF THREADING SCREW (4)



[16]
Ø .630
BOLT CIRCLE

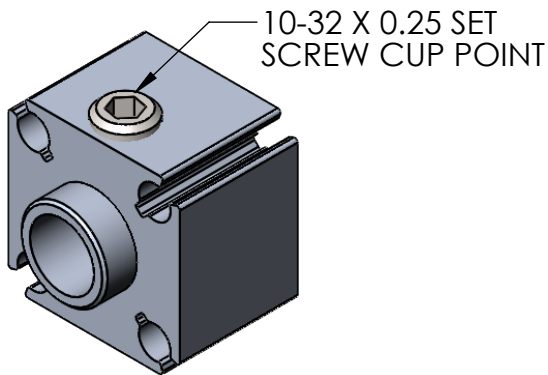
REVISION HISTORY			
REV.	DESCRIPTION	DATE	DRAWN BY
1	ORIGINAL PRINT	7/27/2017	T. NGO
2	DRAWN TO MEET AMDS-1	7/9/2018	B. HODSON

SECTION A-A




Ø .159 THRU TO PART CENTERLINE
10-32 UNF THRU TO PART CENTERLINE

*** SEE CAD FOR ADDITIONAL TOOLPATH INFO***



10-32 X 0.25 SET
SCREW CUP POINT

UNLESS OTHERWISE SPECIFIED:		COMMENTS:			
DIMENSIONS ARE IN INCHES		DUAL DIMENSIONS ARE IN MILLIMETERS.			
TOLERANCES:		BREAK ALL SHARP EDGES		TITLE:	
FRACTIONAL	±1/16			<h1>24T SERVO NUB</h1>	
ANGULAR: MACH	±1°				
ANGULAR: BEND	±5°				
ONE PLACE DECIMAL	±0.1				
TWO PLACE DECIMAL	±0.01			SIZE	DWG. NO.
THREE PLACE DECIMAL	±0.005			A	am-3668
FOUR PLACE DECIMAL	±0.0005				REV
MATERIAL	6105-T6 ALUMINUM	CHECKED	NAME	DATE	2
FINISH	TUMBLLED	ENG APPR.	NL	7/23/18	
DO NOT SCALE DRAWING		MFG APPR.			
		Q.A.			
		SCALE: 3:1		WEIGHT:	SHEET 1 OF 1