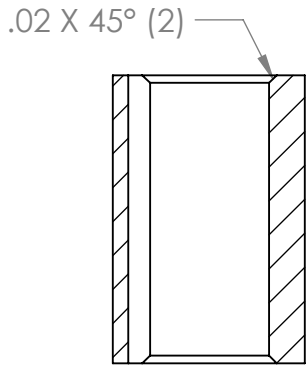
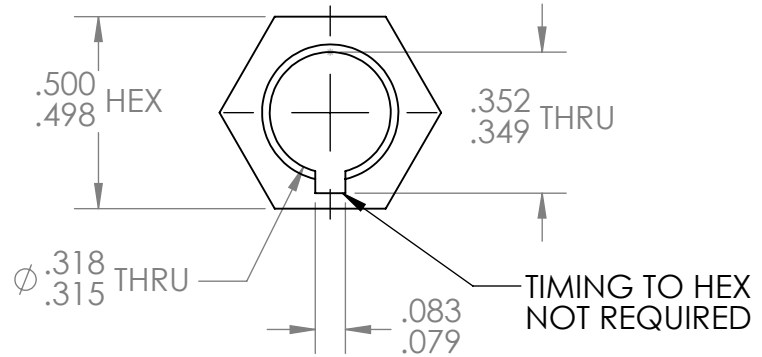
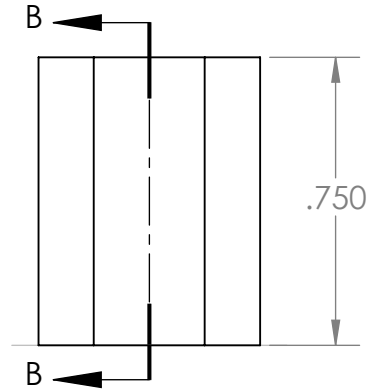


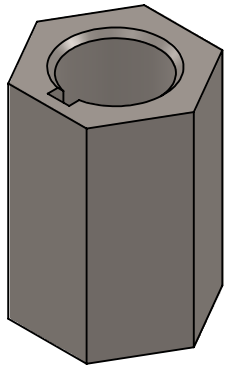
REVISION HISTORY			
REV.	DESCRIPTION	DATE	DRAWN BY
1	ORIGINAL PRINT	1/19/2010	A. BAKER
2	UPDATED TO AMDS-1	6/26/2018	A. MILLS




SECTION B-B



*** SEE CAD FOR ADDITIONAL TOOLPATH INFO***



UNLESS OTHERWISE SPECIFIED:		COMMENTS:				
DIMENSIONS ARE IN INCHES		DUAL DIMENSIONS ARE IN MILLIMETERS.				
TOLERANCES:		BREAK ALL SHARP EDGES		TITLE:		
FRACTIONAL	±1/16			8MM TO 500 HEX		
ANGULAR: MACH	±1°			SHAFT ADAPTER		
ANGULAR: BEND	±5°			SIZE	DWG. NO.	REV
ONE PLACE DECIMAL	±0.1			A	am-0588	2
TWO PLACE DECIMAL	±0.01			SCALE: 2:1 WEIGHT: SHEET 1 OF 1		
THREE PLACE DECIMAL	±0.005					
FOUR PLACE DECIMAL	±0.0005					
MATERIAL		NAME	DATE			
1018, 1215, 12L14 STEEL		CHECKED	6/26/18			
FINISH		ENG APPR.				
		MFG APPR.				
		Q.A.				