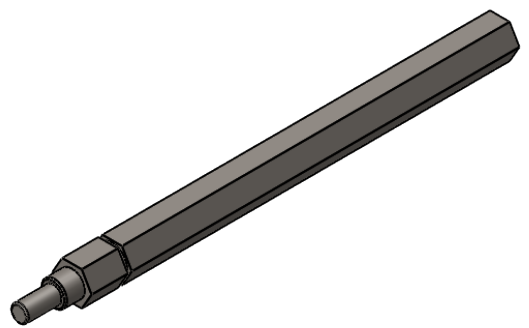
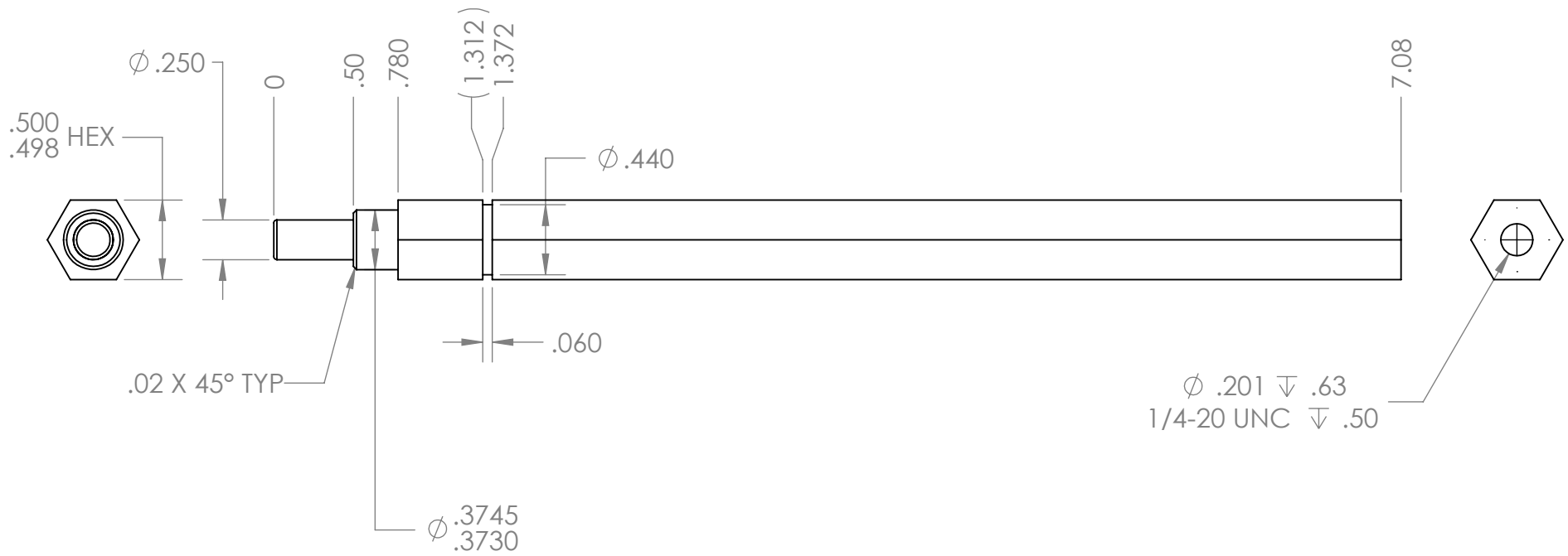



REVISION HISTORY			
REV.	DESCRIPTION	DATE	DRAWN BY
1	ORIGINAL PRINT	6/18/2014	
2	TOLERANCES UPDATED, IP CASCADE PART NUMBER CHANGE	1/11/2017	N. LAWRENCE
3	DRAWN TO MEET AMDS-1, TOLERANCES UPDATED	6/6/2018	A. SHORES



\*\*\* SEE CAD FOR ADDITIONAL TOOLPATH INFO\*\*\*

UNLESS OTHERWISE SPECIFIED:		COMMENTS:					
<b>DIMENSIONS ARE IN INCHES</b>		DUAL DIMENSIONS ARE IN MILLIMETERS.					
TOLERANCES: FRACTIONAL $\pm 1/16$ ANGULAR: MACH $\pm 1^\circ$ ANGULAR: BEND $\pm 5^\circ$ ONE PLACE DECIMAL $\pm 0.1$ TWO PLACE DECIMAL $\pm 0.01$ THREE PLACE DECIMAL $\pm 0.005$ FOUR PLACE DECIMAL $\pm 0.0005$		BREAK ALL SHARP EDGES		TITLE: <b>TOUGHBOX LONG 500IN HEX SHAFT</b>			
MATERIAL <b>4140 STEEL</b>		CHECKED	NAME NL	DATE 7/3/18	SIZE <b>A</b>	DWG. NO. <b>am-0801a</b>	REV <b>3</b>
FINISH <b>ZINC PLATED</b>		ENG APPR.		MFG APPR.		SCALE: 1:1 WEIGHT: SHEET 1 OF 1	
DO NOT SCALE DRAWING		Q.A.					